

SEASON QUIZ

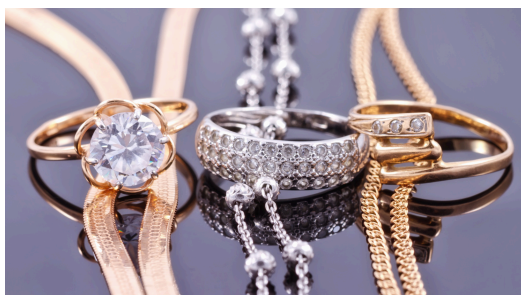
This quick quiz won't reveal your exact season, but it will point you in the right direction. In just four questions, you'll start uncovering whether you lean warm or cool—and get one step closer to building a wardrobe that really works for you.



QUESTION 1: Vein Color

In natural light — are your veins more:

- a. Greenish
- b. Purple/Blue



QUESTION 2: Jewelry

Do you look best in:

- a. Gold tones
- b. Silver tones



QUESTION 3: Eye Color

Your eye color has:

- a. Warm golden/hazel tones
- b. Cool gray/blue or icy tones



QUESTION 4: Colors

You feel confident in:

- a. Warm, earthy colors
- b. Icy, clear tones

SEASON QUIZ

WARM

If you answered mostly A's...

AUTUMN

Warm, rich, and earthy. This palette features tones like olive, rust, mustard, and deep teal. It's cozy, grounded, and full of depth.

SPRING

Light, warm, and fresh. Think clear pastels and warm, sunlit hues—like peach, butter yellow, mint, and soft coral. The palette feels youthful, bright, and full of energy.

COOL

If you answered mostly B's...

WINTER

Cool, bold, and high-contrast. Think icy pastels, true black and white, jewel tones, and striking primaries. The look is dramatic, crisp, and confident.

SUMMER

Cool, soft, and muted. Colors are gentle and romantic—lavender, dusty rose, soft blue, and misty gray. The vibe is elegant, breezy, and refined.



Ready to dive in deeper and find your exact Season?

Tired of guessing what colors actually work for you?

Book a **FREE Color + Style Consultation** — limited spots available.

We'll uncover your exact season, style essence, and how to build a wardrobe that loves you back.

Book Today